

SYMPOSIUM

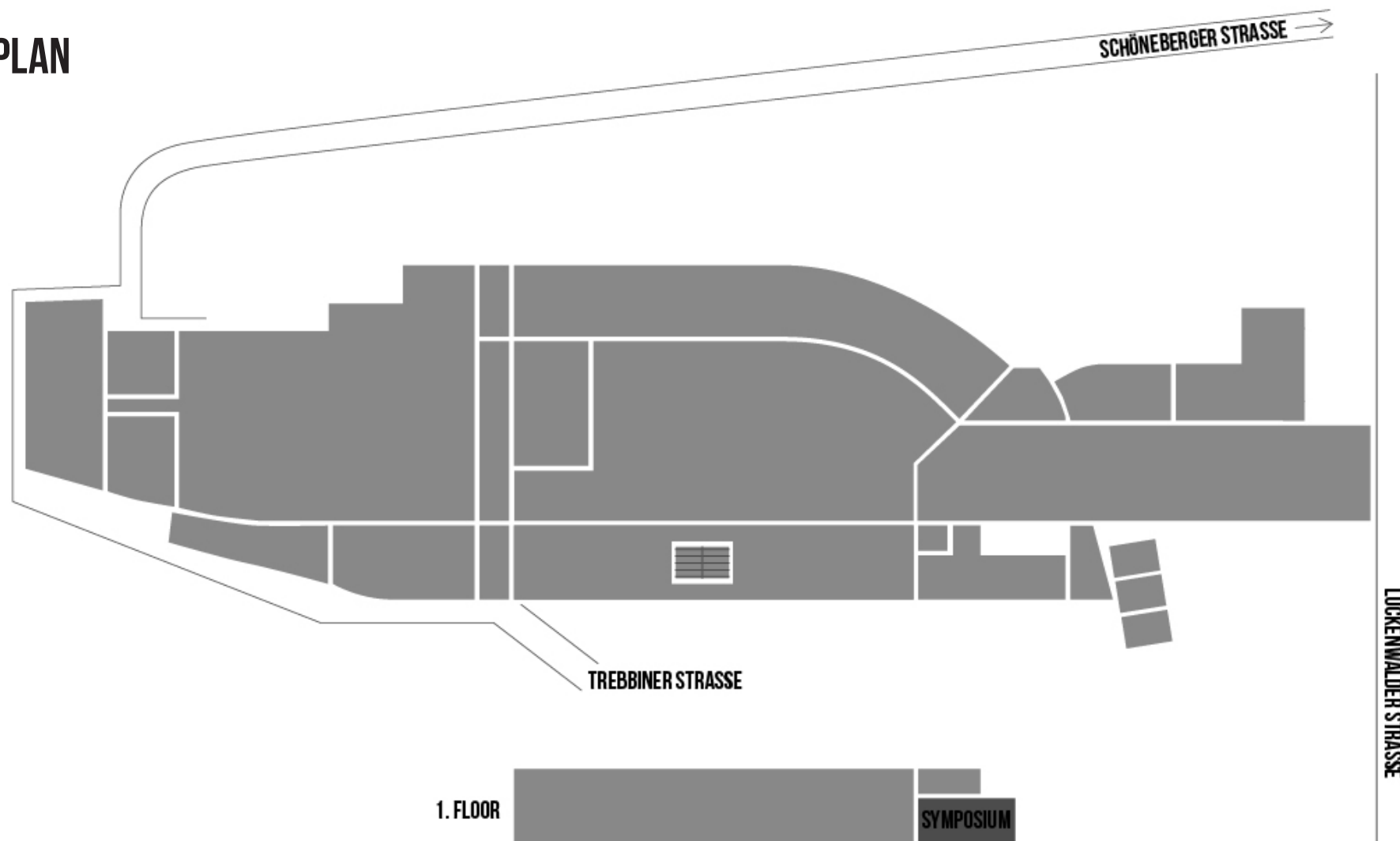
STATION-BERLIN | EIGHT HALLS, 23.000 SQUARE METRES OF SPACE. INFINITE POSSIBILITIES.

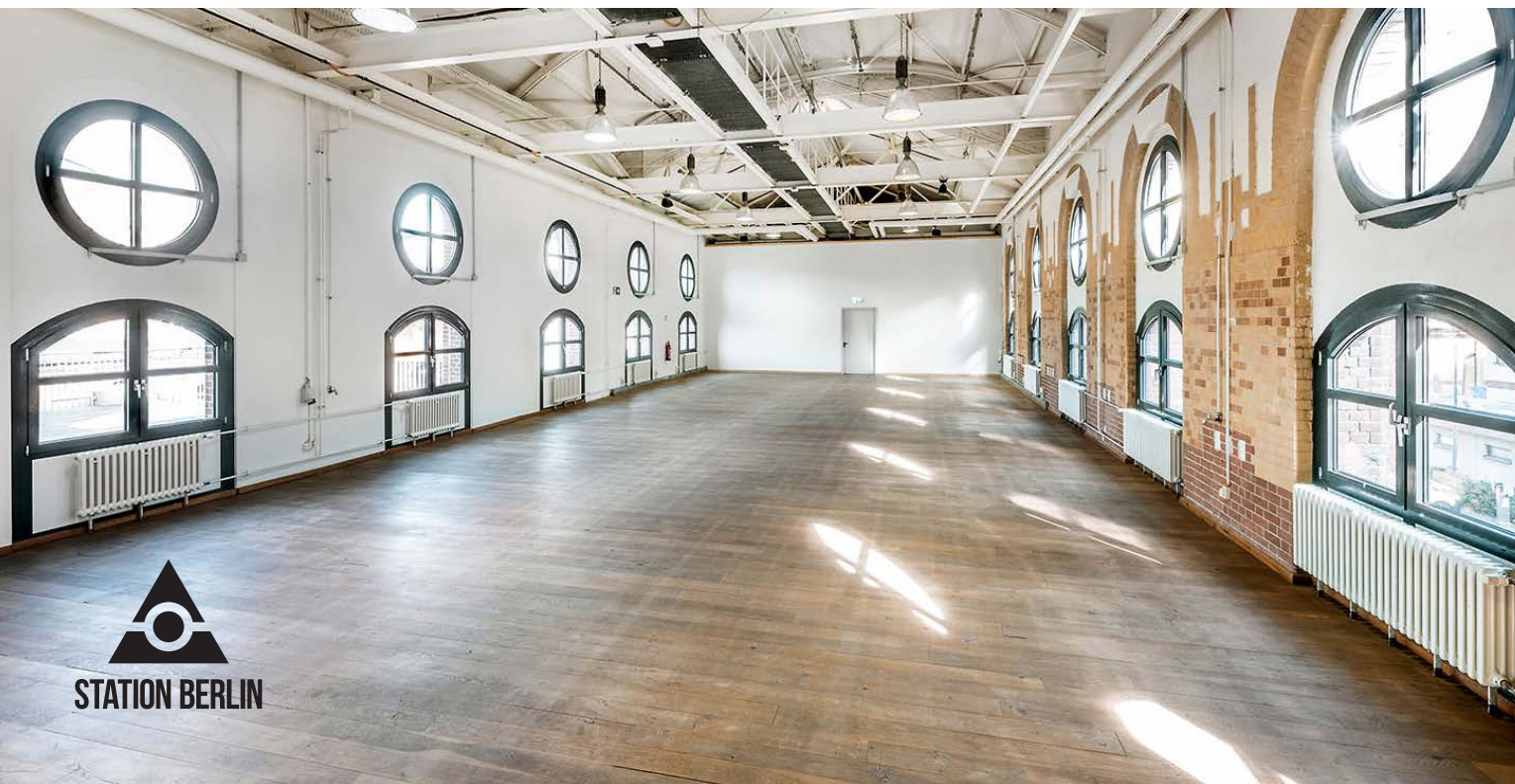


STATION BERLIN

SYMPOSIUM

GROUND PLAN





SYMPOSIUM

INFO

The Symposium is directly connected to Hall 5; it offers 264 sqm of space and a rooftop terrace that can be custom configured with furnishings and equipment.

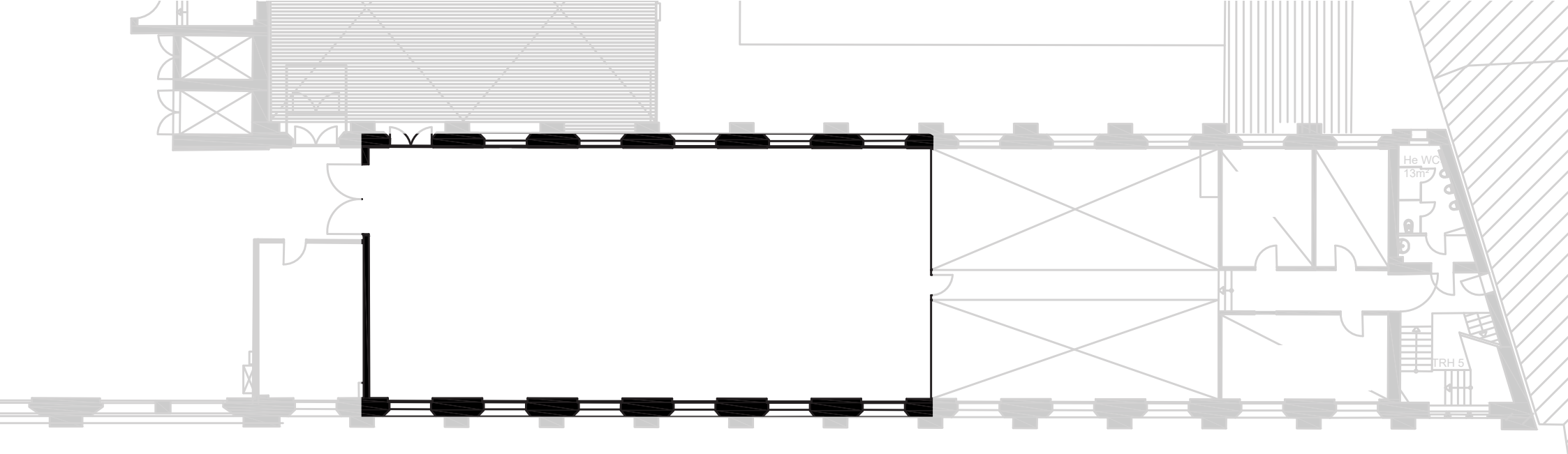


SYMPOSIUM

INFO

The Symposium is perfect for conferences and formal management board meetings.

High ceilings, oiled parquet floors and large windows: The Symposium also offers a cordial framework for dinners, press conferences, workshops and much more.



SYMPOSIUM

FACTS

Floor space	ca. 264 sqm
Maße	24,3 x 10,9 m
Clearance height	7,70 m
Lamp height	4,50 m
Beam height	4,70 m
Level	First Floor

SEATING*

Row	170 pax
Banquet	120 pax
Without seating	290 Standing

OTHER

Power	Yes
Water	Yes
LAN/WiFi	Yes/Yes
Truck/car access (via ramp)	No/No
Heating/Cooling	Yes/No
Blackout	Optional

*Reference point. The maximum room capacity depends on the specific room concept and has always be considered individually.